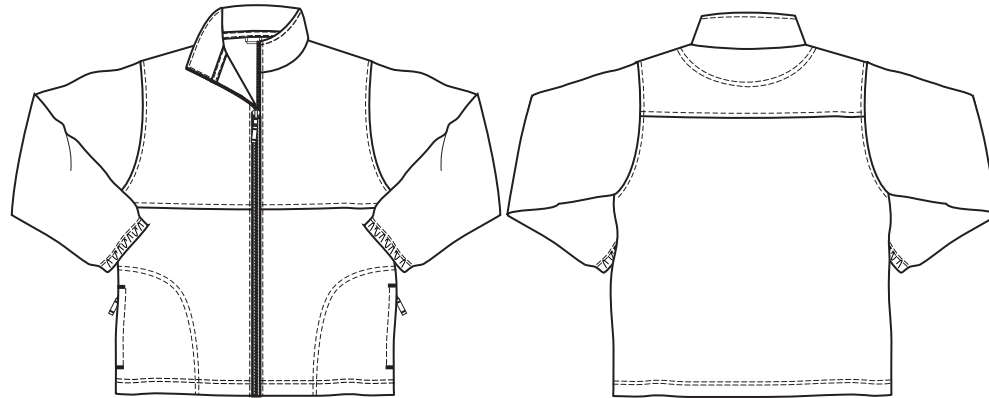


## Polar Fleece

Ref: 3JP

- 100% anti-pill Polyester polar fleece
- 300gsm
- Top stitched seam detail
- Two zip pockets with matching puller tabs
- Full length zip
- Elasticated cuffs and drawcord
- BS EN 14682 compatible in-pocket toggle system
- Hanging loop and taped neck seam



Child-VAT Zero Rated

TO FIT CHEST"	25	26	28	30	32	34
AGE	3/4	5/6	7/8	9/10	11/12	13

Adult-VAT Standard Rated

TO FIT CHEST"	36	39	43	47	51	57
SIZE	S	M	L	XL	XXL	60's



Black    Bottle    Burgundy    Dark Royal    Grey    Navy    Purple    Red